



HOW TO INSTALL

SOLAR PRO TWINWALL POLYCARBONATE ROOFING



Extend your outdoor living area with Solar Pro Polycarbonate Roofing. Solar Pro provides protection from the elements and offers protection from UV Rays.

www.cebelio.co.nz



WHAT YOU'LL NEED

TOOLS

Cordless Drill

Sharp knife, handsaw of fine tooth circular saw (if cutting the sheets to size)

MATERIALS

Solar Pro twinwall Roofing Sheets

Stainless steel Twinwall fixings

Flashings (if using)

Twinwall joiner system

Twinwall anti-dust tape

Limitation of liability

This project advice has been produced to provide basic information and our staff are available to answer questions you may have. Because this guide is general in nature, neither Cebelio Holding Ltd nor their staff are responsible for the application of these design principles in any particular case, as the contents of this brochure may need to be modified for the particular site and circumstances. Cebelio Holdings Ltd is not responsible for the quality of work carried out on the goods by the consumer and is not responsible for the design or construction of any structure in which the goods are incorporated. Where applicable consumers should ensure that they comply with The New Zealand Building Code and/or Local Body Bylaws in respect of any such structures. Consumers are advised to call a qualified tradesman such as a builder, electrician or plumber where expert services are required. Cebelio Holdings Ltd will not be liable for any consequential loss howsoever arising from the use of goods sold, nor for any loss caused by defective or inadequate structures in which goods are incorporated.

BEFORE YOU START

You will need a minimum roof pitch of 5°, we recommend 10°. **This will ensure adequate water run-off.**

Install sheets with the **flutes parallel to rain flow.**

Supporting beams must be at least 30mm wide to ensure the stability of sheets and fastening accessories.

Twinwall should be installed on Rafters, purlins or studs at a **maximum of 610mm centres.** High wind areas, the spacing should be reduced to 400mm centres.

It is important that all building regulations are met and/or a qualified builder checks and approves the structure prior to Twinwall being installed.

PREPARING THE SHEETS

Using a Stanley knife, saw or circular saw **cut the Twinwall sheets, polycarbonate joiners and end caps to the desired length.** When cutting the length of the sheets ensure you cut down through the middle of the flute, this will ensure the flute stays sealed. (Twinwall sheets and polycarbonate jointers will expand and contract approx 3-5mm in length and 2mm wide) Fold back the printed sheet **protection film by 50mm** on each side.

Attach Twinwall **Anti-dust tape** to the bottom and top ends of the sheet. (It is essential to use the end caps in conjunction with the Anti-dust tape to prevent the tape degrading)

Fix the **polycarbonate end caps to the sheet** with the short side on top of the sheet. Don't fix flush, leave a 2-3mm gap to prevent condensation.

FIXINGS AND JOINING SYSTEM

Twinwall joiners end caps and fixings

The H joiner is a one-piece system that is lightweight and easy to install. The two-piece joiner set is also lightweight and snaps together for easy to install.

End caps are used to cap each end of the sheet, over the sealer and dust tape, they can also be used on the side edges.

Stainless steel Twinwall Fixings with rubber washers are designed for timber-framed roofing projects, giving you peace of mind with those coastal and any potential corrosive environments.



Twinwall Anti-dust tape

An Anti-dust tape is a non-woven tape system that is designed to prevent mould, algae, insects and dust from accumulating within the walls of the Twinwall Polycarbonate sheets. It is also designed to expand and contract with the Twinwall sheets.



INSTALLING TWINWALL

STEP ONE

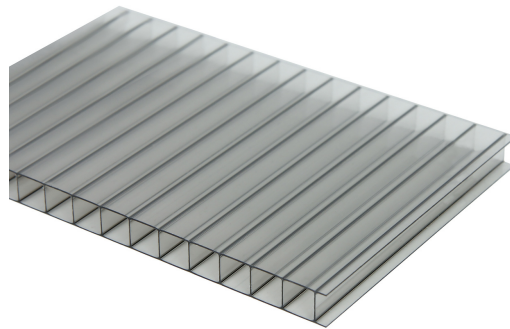
After cutting the Polycarbonate Joiners and the sheets to the desired length Pre-drill the joiner system.

H Joiner - Pre-drill a 6mm hole before fixing it at every 400mm interval (300mm for high wind area's) using Twinwall fixing screws.

2 piece joiner- For the bottom part of the 2 piece only, follow the steps above for the H-joiner

STEP TWO

Peel off approx 50mm of the protective masking along all edges of the sheet and apply Twinwall Anti-Dust tape to the bottom and ends of the sheet.



Extend your outdoor living area with Solar Pro Polycarbonate Roofing. Solar Pro provides protection from the elements and offers protection from UV Rays.

www.cebelio.co.nz

INSTALLING TWINWALL

STEP THREE (A)

For the H-Joiner, insert Twinwall sheets to each side of the Joiner. Tip: Use a small amount of soapy water to help slide the sheets in. Ensure you leave at least 2mm between the sheet and the joiner to allow for expansion and contraction.

For 1220mm wide sheets, pre-drill a 6mm hole and fix the screws at every 300mm along the edge of purlins/rafters and every 500mm of internal purlins/rafters.

STEP THREE (B)

For the 2 piece joiner, place Twinwall sheets onto each side of the bottom part of the joiner. Ensure you leave at least 2mm between the sheet and the joiner to allow for expansion and contraction. Then connect and click the top and bottom parts of the joiner.

For 1220mm wide sheets, pre-drill a 6mm hole and fix the screws at every 300mm along the edge of purlins/rafters and every 500mm of internal purlins/rafters.

STEP FOUR

Slide, set and fix the Polycarbonate joiner along the loose end of the sheet.

STEP FIVE

Repeat steps above until the roof is completed.

STEP SIX

Insert the Polycarbonate End Cap to the bottom and top ends of the Twinwall sheets.

STEP SEVEN

Remove all protective masking.

SAFETY INFORMATION

- Always exercise extreme care when working on high structures. **Never walk directly on the sheeting.**
- Always wear eye protection when using cutting tools.
- For safety precautions we recommend the use of safety mesh for installation about 3m.
- We don't recommend collecting drinking water from any roof without appropriate precautions and filtration. Check with local water authorities for further advice.

CAUTIONS AND IMPORTANT INFORMATION

To maximise the life of your Solar Pro roofing, Cebelio recommends to avoid exposing your roofing to excess heat from patio heaters. A distance of 1m should be kept between the sheets and the heat source.

IMPORTANT

These instructions are designed to prevent leaking and alleviate the need of sealants.

Sealants, especially silicone, are incompatible with polycarbonate. They will damage the sheet Use the appropriate flashings and infill strips to help protect your space from weather.